



Drying buildings and water damages

AERIAL[®]

Quiet, light and powerful

- Energy-saving rotary compressor
- Large water tank with automatic shut-off when full
- Built-in hygostat
- Operating hours counter
- Air filter
- Optional power counter



The ideal combination for drying out water damage



AD 420-VA (stainless steel casing)



AERIAL condensation dryers have been making a name for themselves for years in the tough world of building sites and industry.

We can offer a suitable unit for a variety of requirements.

The new AD 420 and AD 430

Modern, fresh look combined with easy handling and high performance. The ideal tool for many drying tasks:

- High performance, even at low temperatures
- Lightweight
- Simple to operate
- Super-quiet operation



Stackable



Water tank included as standard



Pump-out kit available as accessory



Optional power counter

► These units can be fitted with AERIAL pump-out kits at any time. In just a few steps the pump-out kit is installed – and it can be removed just as quickly, too.

At only 12 and 19 kg, the condensation dryers of the AD 4 series are the lightest professional dryers in their performance class.

With their practical carrying handle the units can easily be carried by just one person and still remain stackable.

Small and light, but with high performance – developed and produced by AERIAL in Norderstedt near Hamburg, Germany.

BlueDry®
 Environmentally friendly, high-performance air dehumidifiers – equipped with the new BlueDry technology.

| Technical specifications |

Type		AD 420	AD 420-VA	AD 430
For heated/unheated rooms of approx. size*	m³	300 / 200		400 / 300
Dehumidifying performance/power consumption at**				
30 °C/80% RH	l/24 h	19.0 / 420 watt		30.5 / 540 watt
20 °C/60% RH	l/24 h	8.0 / 340 watt		12.0 / 400 watt
10 °C/70% RH	l/24 h	6.0 / 280 watt		8.0 / 320 watt
Max. power consumption	watt	420		540
Air circulation rate	m³/h	315		600
Working temperature range	°C	+3 °C to +32 °C		+3 °C to +32 °C
Power supply	V/Hz	230 V / 50 Hz		230 V / 50 Hz
Dimensions (height/width/depth)	mm	520 x 332 x 360		580 x 340 x 380
Noise level	dB(A)	46	45	51
Weight	kg	12	19	19
Arrangement		On the ground, optional wall mounting (wall bracket available as accessory)		
Condensate drainage		Water tank (8.3 l) with integrated complete switch off (when water bucket is full) or tube connector		
Equipment levels (optional)		Pump-out kit		

*Guideline figures/based on experience · **Based on DIN EN 810 · Subject to technical changes · Made in Germany

Mobile, tough unit for optimum dehumidifying results

Dehumidifying technology that means business



Simple to operate



- High air circulation rates
- Hot-gas defrosting
- Built-in hygostat
- Operating hours counter
- Optional power counter
- Large water tank with automatic shut-off when full
- Tube connector
- Optional pump-out kit



► Economical and powerful

- System perfectly protected in strong PE casing
- Intelligent casing design makes for really easy servicing
- Big wheels and plenty of grips for maximum mobility combined with optimum stability
- All operating elements, including hygostat, positioned clearly on the user side
- Optional power counter

Reliable and trusted

High-performance dehumidifying with low power consumption – you can rely on the AD 6 series. Another benefit is how easy it is to move around.

These units can be transported in any position, lying flat or upright. The sturdy surrounding transport frame and two large, fully rubberised wheels make them highly mobile.

Ideal for use in water management plants, in the industry and on building sites.



AD 650

AD 680

Easy to use, convenient to handle

The AD 7 series air dehumidifiers utilise the condensation principle and are among the most advanced air dehumidifiers currently available.

The rotation-moulded plastic casing is extremely resistant to impacts and breakages. It is also flame-retardant and physically indestructible.

This unit is especially easy to service and clean after use on building sites, and can be transported in any position – upright or laying down.



AD 750 with integrated water tank



AD 780 with standard built-in condensate pump

| Technical specifications |

Type		AD 650	AD 680
For heated/unheated rooms of approx. size*	m ³	500 / 400	1,100 / 700
Dehumidifying performance/power consumption at**			
30 °C/80% RH	l/24 h	54.0 / 900 watt	78.0 / 1,250 watt
20 °C/60% RH	l/24 h	23.5 / 660 watt	35.0 / 900 watt
10 °C/70% RH	l/24 h	14.0 / 550 watt	20.0 / 720 watt
Max. power consumption	watt	900	1,250
Air circulation rate	m ³ /h	660	820
Working temperature range	°C	+3 °C to +32 °C	+3 °C to +32 °C
Noise level	dB(A)	53	55
Power supply	V/Hz	230 V / 50 Hz	230 V / 50 Hz
Dimensions (height/width/depth)	mm	795 x 540 x 510	910 x 650 x 550
Weight	kg	42	58
Equipment levels (optional)		Pump-out kit, Power counter	

*Guideline figures/based on experience · **Based on DIN EN 810 · Subject to technical changes · Made in Germany

| Technical specifications |

Type		AD 750	AD 780
For heated/unheated rooms of approx. size*	m ³	600 / 500	1,100 / 700
Dehumidifying performance/power consumption at**			
30 °C/80% RH	l/24 h	55.0 / 900 watt	78.0 / 1,250 watt
20 °C/60% RH	l/24 h	24.5 / 660 watt	35.0 / 900 watt
10 °C/70% RH	l/24 h	14.0 / 560 watt	20.0 / 720 watt
Max. power consumption	watt	900	1,250
Air circulation rate	m ³ /h	710	820
Working temperature range	°C	+3 °C to +32 °C	+3 °C to +32 °C
Noise level	dB(A)	53	55
Power supply	V/Hz	230 V / 50 Hz	230 V / 50 Hz
Dimensions (height/width/depth)	mm	880 x 520 x 495	1,000 x 640 x 580
Weight	kg	42	57
Equipment levels (optional)		incl. condensate pump, Power counter	

*Guideline figures/based on experience · **Based on DIN EN 810 · Subject to technical changes · Made in Germany

Reliable, quiet equipment for pressure and suction drying



- Superbly crafted casing made from high-quality stainless steel. Strong and durable
- Three-stage safety system to protect compressor
- Direct suction and blowing system, meaning that the casing itself is not put under pressure or vacuum

Easy to transport



Now with transport frame

We now offer the AB 500 and AB 1000 models with a practical optional transport frame.

Our AB series: quiet, convenient, high-quality stainless-steel units for the professional drying of hollow spaces and insulation layers following water ingress or damp damage, using blowing and sucking operation.

The system can be used as a pressure or vacuum pump to convey air and non-explosive gases and gas-air mixtures.

- Side-channel compressors
- Fused plug
- Thermo-guard against overheating
- Motor protecting switch
- Air flow indicator
- Power counter
- Cable winder
- Wear-resistant rubber feet
- 50 mm tube connectors
- Built-in coarse filter



▶ Perfectly suited for combined operation with AERIAL adsorption dryers and VDT water separators.



Technical specifications				
Type		AB 200	AB 500	AB 1000
Recommended drying area*	m ²	approx. 10 bis 15	approx. 20 bis 30	approx. 40 bis 50
Air flow rate, free-blowing	m ³ /h	80	150	220
Max. pressure	mbar	110	160	200
Noise level	dB(A)	< 46	< 48	< 50
Power supply	V/Hz	230 V / 50 Hz	230 V / 50 Hz	230 V / 50 Hz
Motor output, side channel compressor	kW	0.4	0.75	1.1
Air intake/outlet connector	mm	Ø 50	Ø 50	Ø 50
Dimensions (height/width/depth) not incl. transport frame	mm	330 x 310 x 365	404 x 410 x 422	470 x 470 x 480
Dimensions (height/width/depth) incl. transport frame	mm	—	1,010 x 545 x 580	1,010 x 600 x 591
Weight not incl. transport frame	kg	19	30	40
Weight incl. transport frame	kg	—	34	44
Features	Air flow indicator/power counter/motor protection/thermosensor			

*Guideline figures/based on experience · Subject to technical changes · Made in Germany

The latest generation of adsorption dryers: powerful and energy-efficient

VDT water separators for suction drying



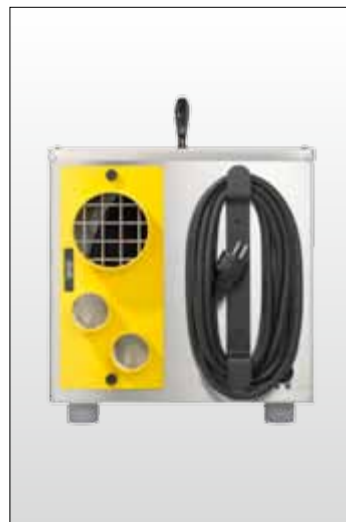
Rotor ECODRY G3-MH

High-performance rotor optimised for maximum water uptake under different intake conditions. The surface of the rotor is very strong. Non-combustible. The rotor is maintenance-free and washable.

PTC heater

Dynamic, safe, self-regulating PTC heating element.

- Fully automatic
- Stainless-steel casing
- Integrated coarse filter
- Optimised for all AERIAL noise boxes



- Handy, compact, robust, made of stainless steel
- Precision drying enabled by built-in hygrostat in the intake
- Interchangeable plate on the dry air side means flexible tube connectors
- Perfectly suited to all AERIAL noise boxes
- Self-regulating PTC heater enables very low dew points in dry air, and offers maximum protection for equipment and rotor
- Simple to disassemble when cleaning the device and the rotor unit

► Built-in hygrostat and digital power counter.



Operating panel

Compact and tough, for vacuum drying

AERIAL's fully automatic water separators have a proven track record in renovation drying. Their high-quality stainless steel casings make them especially robust and durable compared with conventional plastic systems.

Compact and convenient, with cable winder, these units are supplied ready to connect up to a compressor or a noise box with compressor. The built-in high-performance pump regulates the pumping-out process fully automatically in conjunction with the integrated level controller.



| Technical specifications |

Type		ASE 200	ASE 300
Dehumidifying performance at 20 °C/60% RH	kg/day	18.75	25.70
Litres per kilowatt-hour	l/kWh	1.13	1.05
Kilowatt-hours per litre	kWh/l	0.89	0.97
Process air rate	m³/h	210	300
Regeneration air rate	m³/h	110	110
Noise level	dB(A)	48	57
Power supply	V / Hz	230 V / 50 Hz	230 V / 50 Hz
Power consumption (at 20 °C/60% RH)	watt	694	1,040
Dimensions (height/width/depth)	mm	285 x 290 x 395	370 x 335 x 430
Weight	kg	14	18

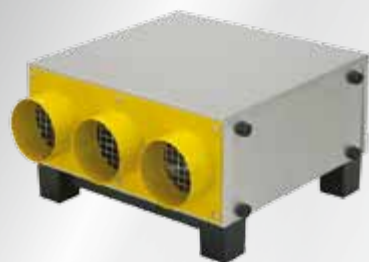
Subject to technical changes · Made in Germany

| Technical specifications |

Type		VDT 1000
Built-in drainage pump		Grundfos (stainless steel)
Compressor fuse	A	10
Pump flow rate (pumping height 1 m)	l/min	138
Pump flow rate (pumping height 2 m)	l/min	120
Pump flow rate (pumping height 3 m)	l/min	84
Pump flow rate (pumping height 4 m)	l/min	45
Dimensions (width/height/depth)	mm	310 x 465 x 580
Weight	kg	24

Subject to technical changes · Made in Germany

Innovative accessories for drying water damages



AIRMAXX 2000

High-performance radial fan, max. 2,000 m³/h

With additional heater for up to 3 kW heat output

Controls, handle, cable winder all on one side

Choice of air outlet connectors,
3 x Ø 100 mm or 6 x Ø 50 mm

Stainless-steel casing, very strong,
weighs only 12 kg



HEPA filter AH 13

Harmful substance filters for
processes such as suction drying
MPPS filtration level:

≥ 99.95% and 99.995%

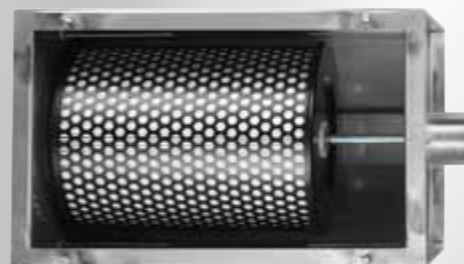
Type: HEPA filter

Filter category as per EN 1822: H13

Filter casing: stainless steel

Filter cartridge: easy to replace

Benefit: no pressure loss



Left: FK gap junction system

For drying gaps between tiles

Right: RF edge groove nozzle

For damage-free drying via edge
grooves

Material: stainless steel



Floor pieces

For drying all insulation layers and
cavities

Robust and strong, perfect grip

High-quality workmanship and
temperature resistance

The angled shape makes the tube lie
perfectly along the floor

Drilled hole diameter: 50 mm



For more information about our comprehensive range of accessories
visit www.aerial.de or refer to our latest price list.

Overview of other products Condensation dryers

Space-saving & super-quiet



AD 110

Wall-mounted units



AD 230/250

Dependable & durable



AD 550

Swimming pools & wellness areas



AP 50/70

Small & compact



DH 18

Maximum mobile performance



AD 810

- Condensation dehumidifiers
- Adsorption dehumidifiers
- Swimming pool dehumidifiers
- Dehumidifiers for domestic use
- Drying equipment
- High pressure blowers
- Air movers



Environmentally friendly,
high-performance air dehumidifiers –
equipped with the
new BlueDry technology.

The dehumidifying specialists

AERIAL[®]
We dry the air

AERIAL GmbH
Oststrasse 128 · 22844 Norderstedt
Germany
Phone: +49 (0)40 526 879-0
Fax: +49 (0)40 526 879-20
info@aerial.de · www.aerial.de